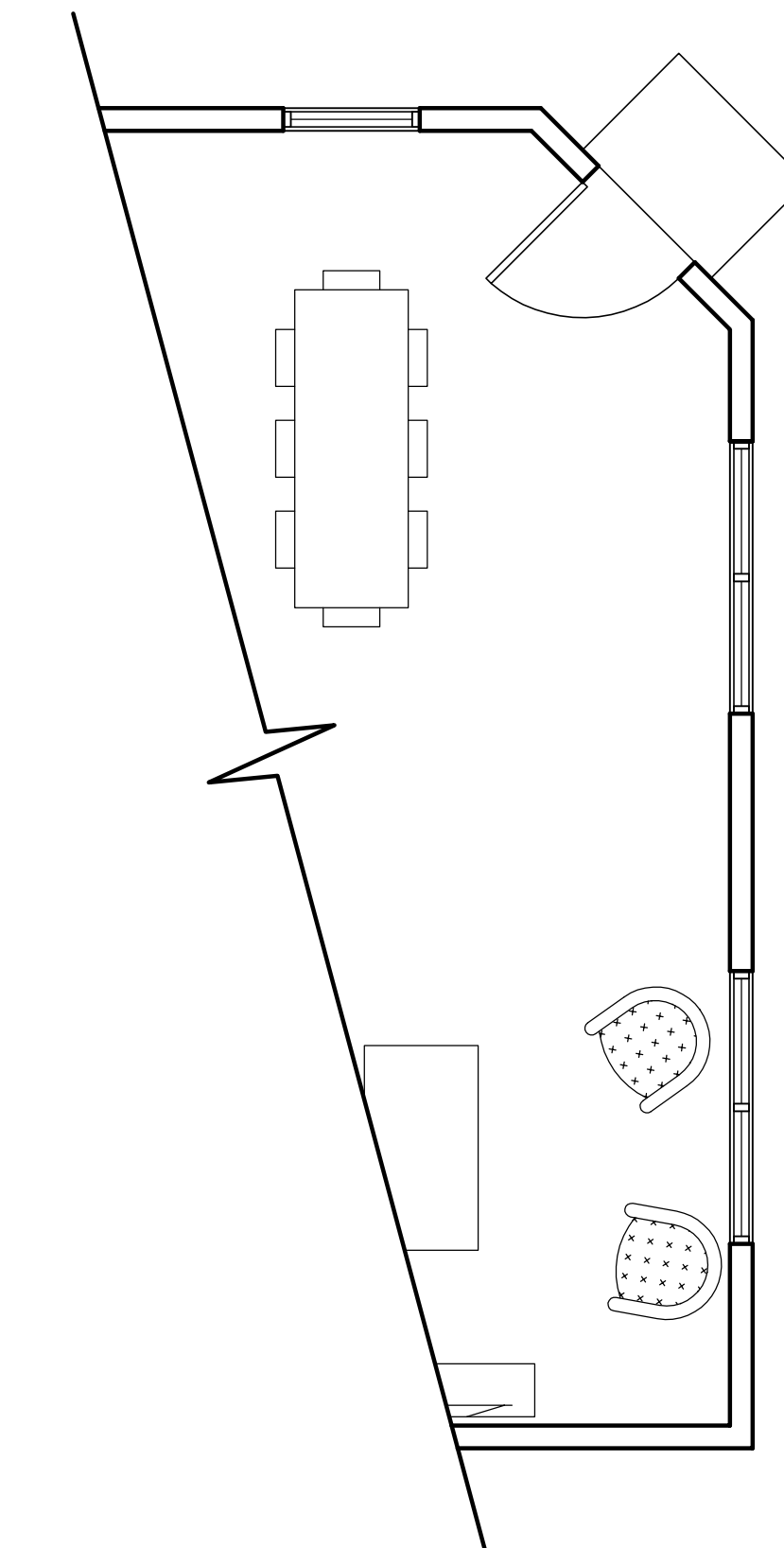


**FLOOR PLAN**  
SCALE: 1/4" = 1'-0"



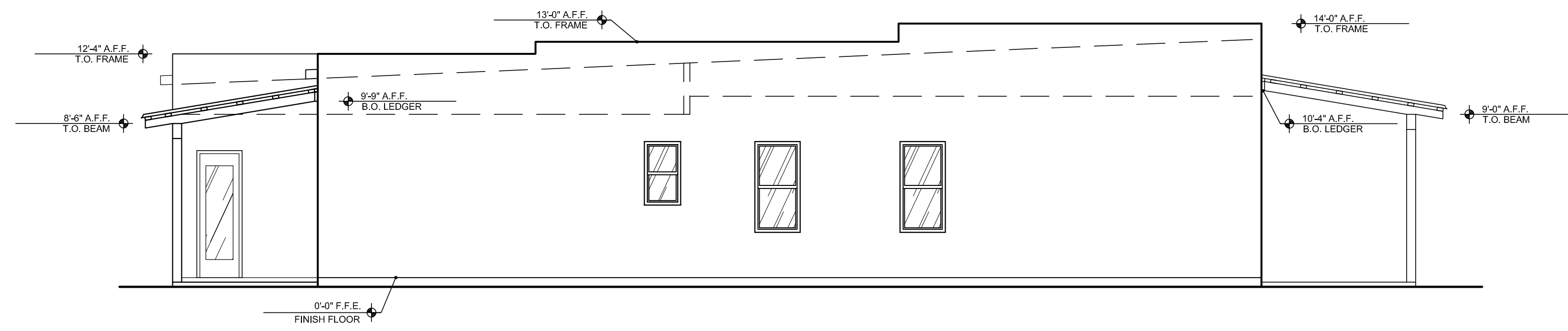
**CORNER ENTRY OPTION**  
SCALE: 1/4" = 1'-0"

**Anita Residence  
for SW Urban**  
1030, 1041, 1045 S. Railroad Ave.  
Tucson, AZ 85705

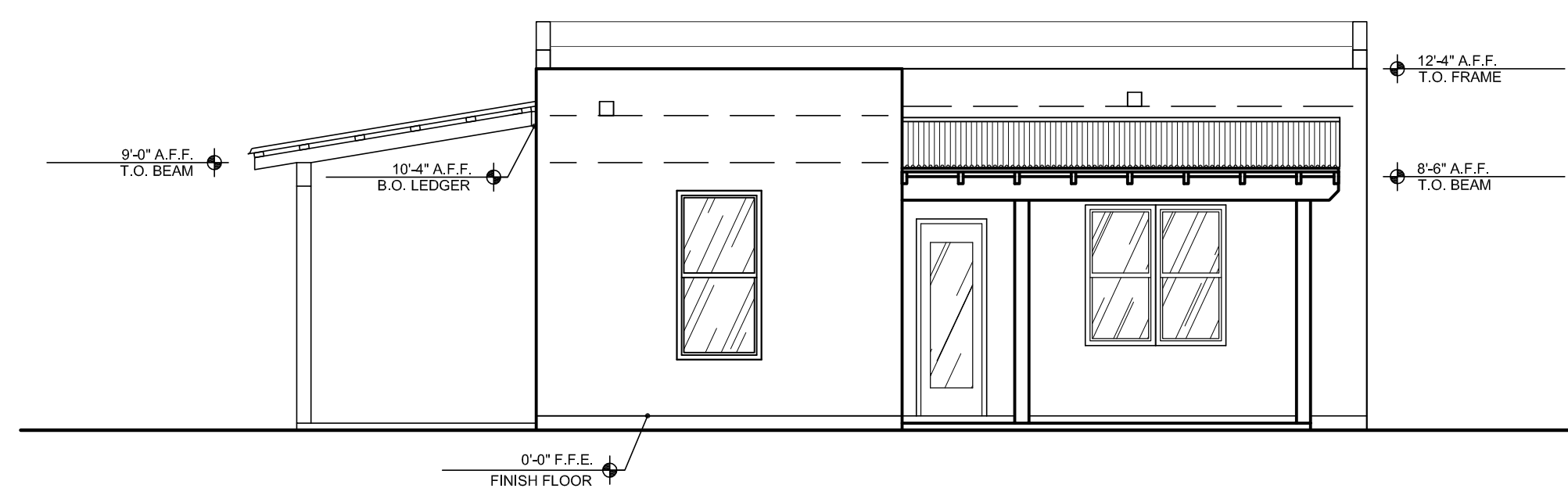
**lanning architecture**  
1202 E Broadway Suite 104  
Tucson, Arizona 85719  
520.792.0265

08.31.18 date  
revised  
revised  
revised

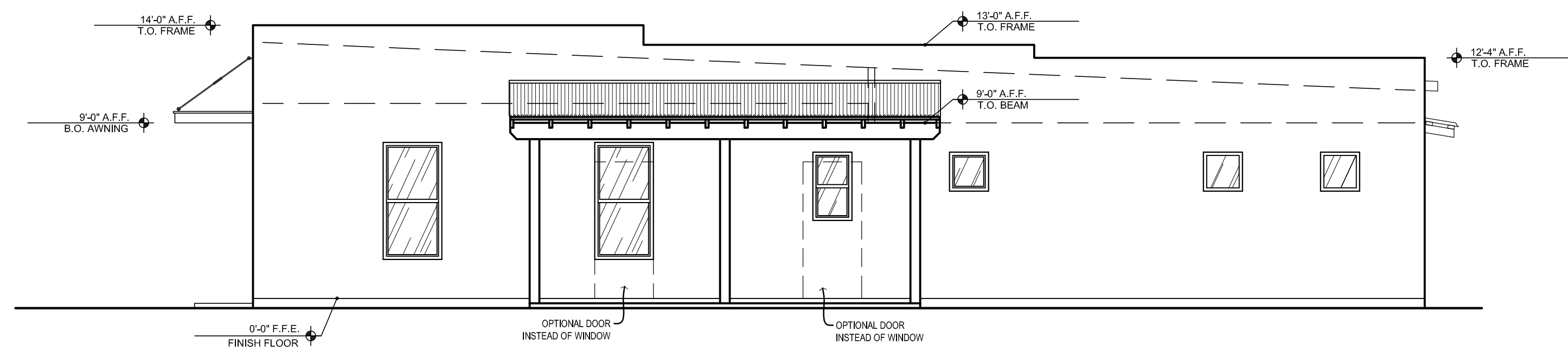
**A-1**  
floor plan



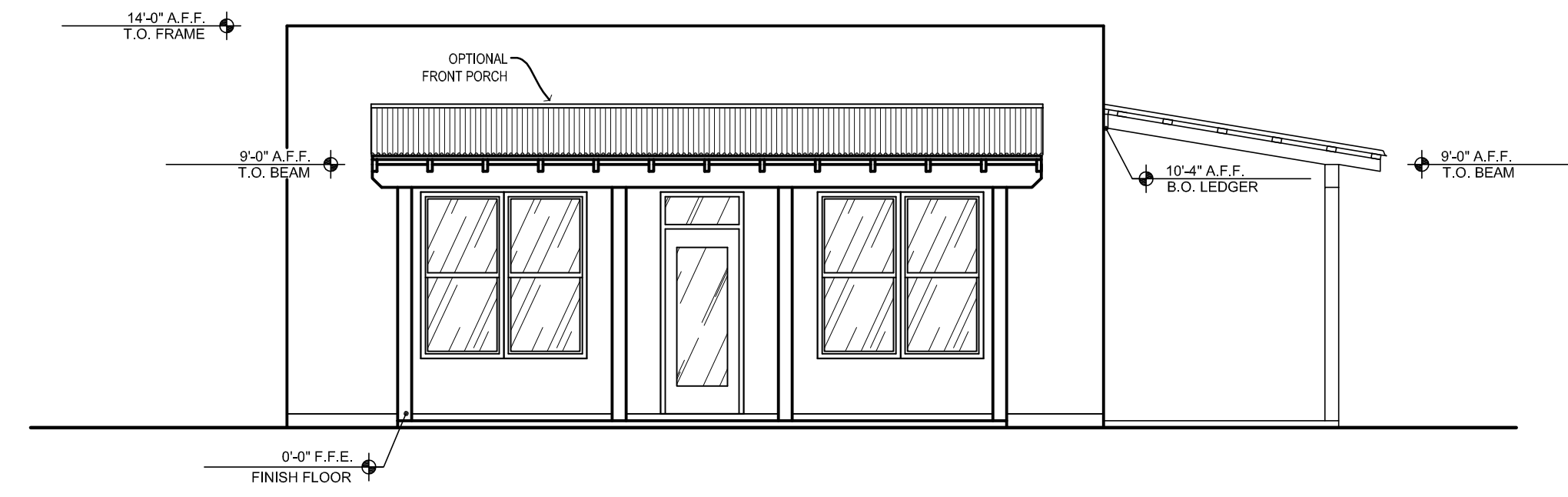
**S ELEVATION**  
SCALE: 3/16" = 1'-0"



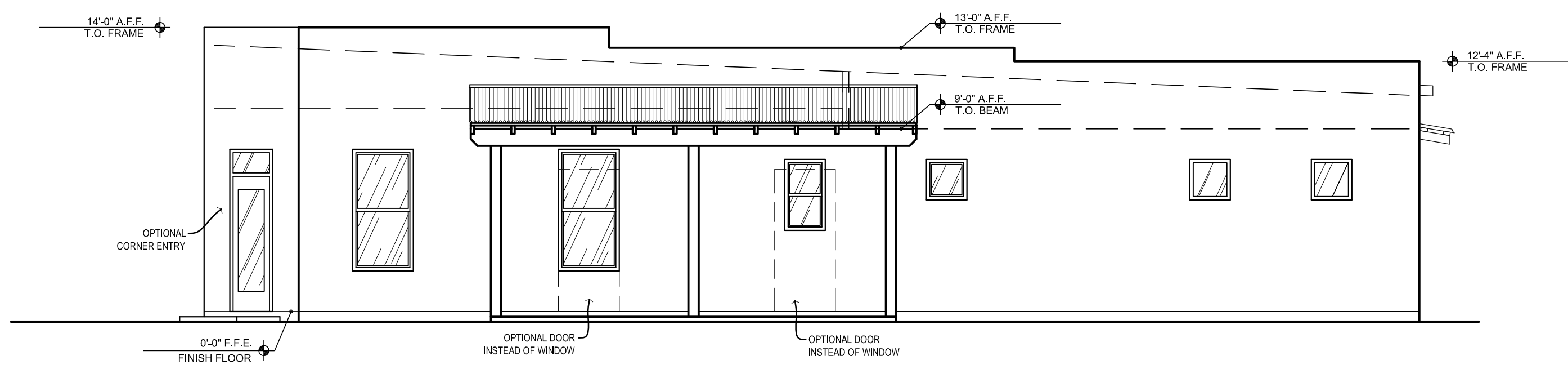
**W ELEVATION**  
SCALE: 3/16" = 1'-0"



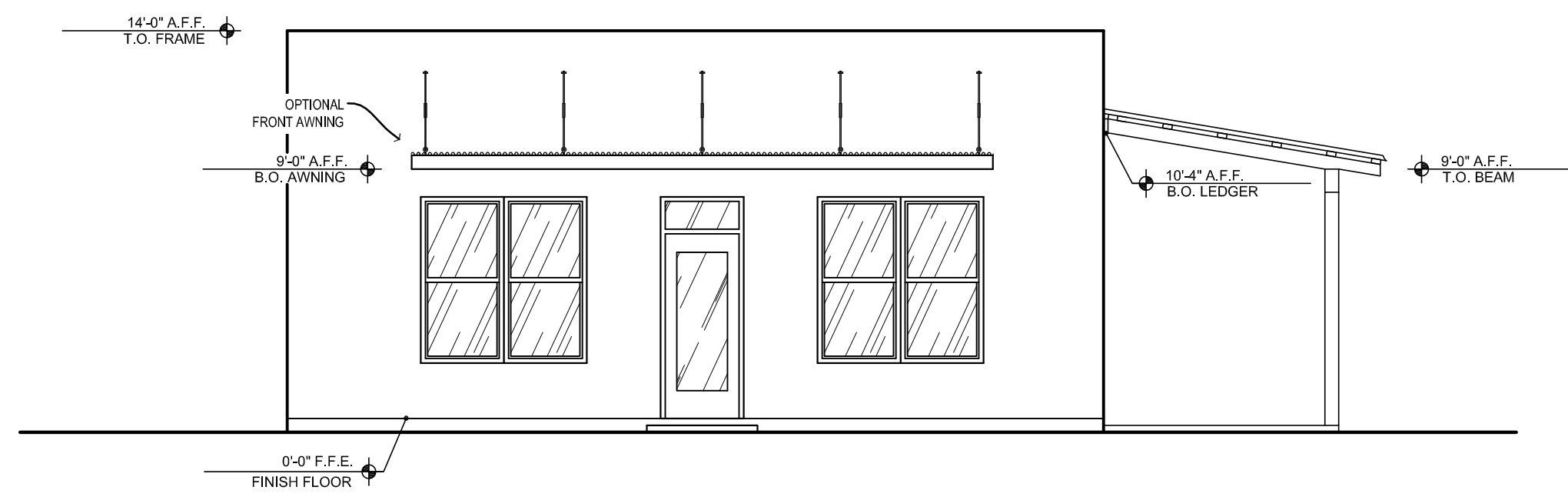
**N ELEVATION**  
SCALE: 3/16" = 1'-0"



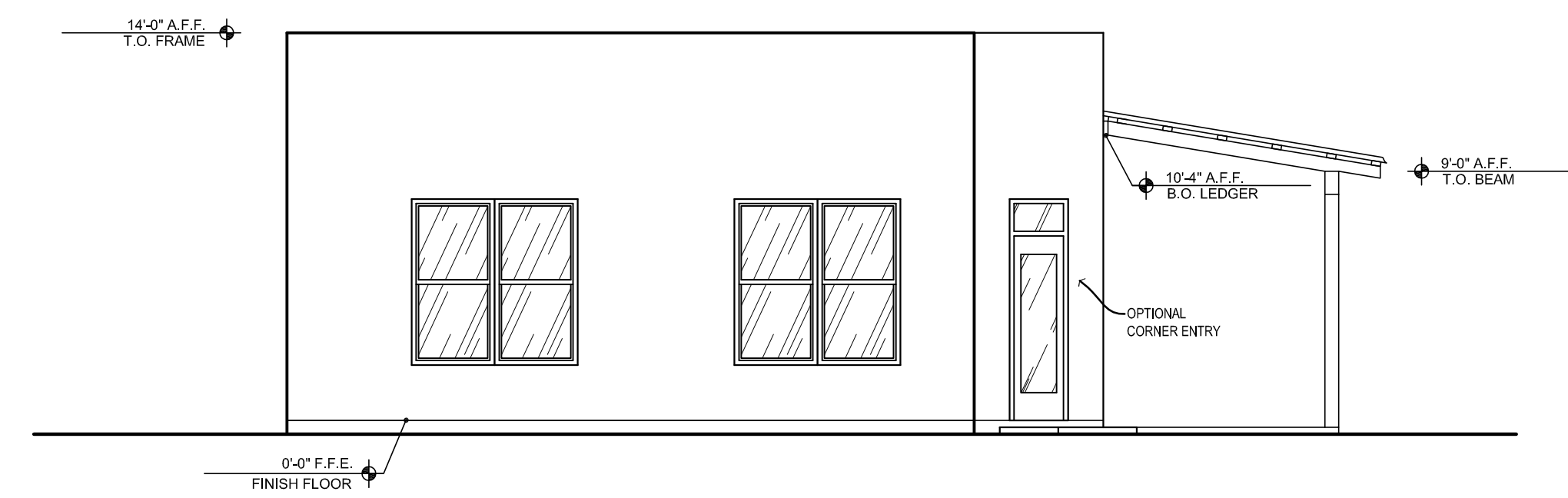
**E ELEVATION (PORCH OPTION)**  
SCALE: 3/16" = 1'-0"



**N ELEVATION (CORNER ENTRY)**  
SCALE: 3/16" = 1'-0"



**E ELEVATION (AWNING OPTION)**  
SCALE: 3/16" = 1'-0"



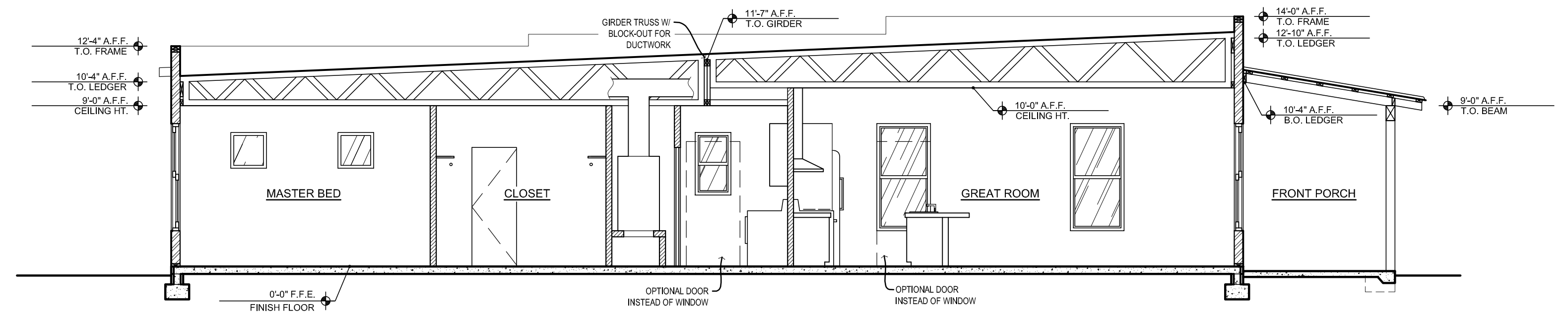
**E ELEVATION (CORNER ENTRY)**  
SCALE: 3/16" = 1'-0"

**Anita Residence  
for SW Urban**  
1030, 1041, 1045 S. Railroad Ave.  
Tucson, AZ 85705

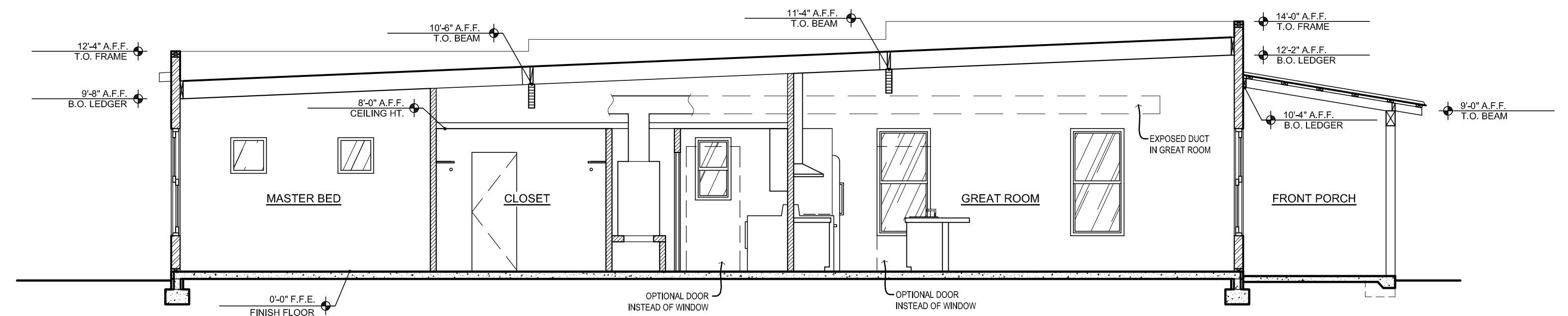
**lanning architecture**  
1202 E Broadway Suite 104  
Tucson, Arizona 85719  
520.792.0265

08.31.18 date  
revised  
revised  
revised

**A-2**  
elev\_sect



**1 BUILDING SECTION (TRUSSES)**  
SCALE: 3/16" = 1'-0"



**1 BUILDING SECTION (BEAMS & JOISTS)**  
SCALE: 3/16" = 1'-0"

**Anita Residence  
for SW Urban**  
1030, 1041, 1045 S. Railroad Ave.  
Tucson, AZ 85705

**lanning architecture**  
1202 E Broadway Suite 104  
Tucson, Arizona 85719  
520.792.0265

08.31.18 date  
revised  
revised  
revised

**A-3**  
sections